

Phenomenon

10 lenses

#1 time



To use this lens, ask yourself?

At what timescale and rhythm does
this phenomenon take place?

#2 perspective



To use this lens, ask yourself?

Who or what's perspective are we taking?

#2 perspective



To use this lens, ask yourself?

Who or what's perspective are we taking?

#3 intimacy



To use this lens, ask yourself?

How can I be intimate with this phenomenon?

#4 scale

To use this lens, ask yourself?

At what scale does your phenomena
take place?



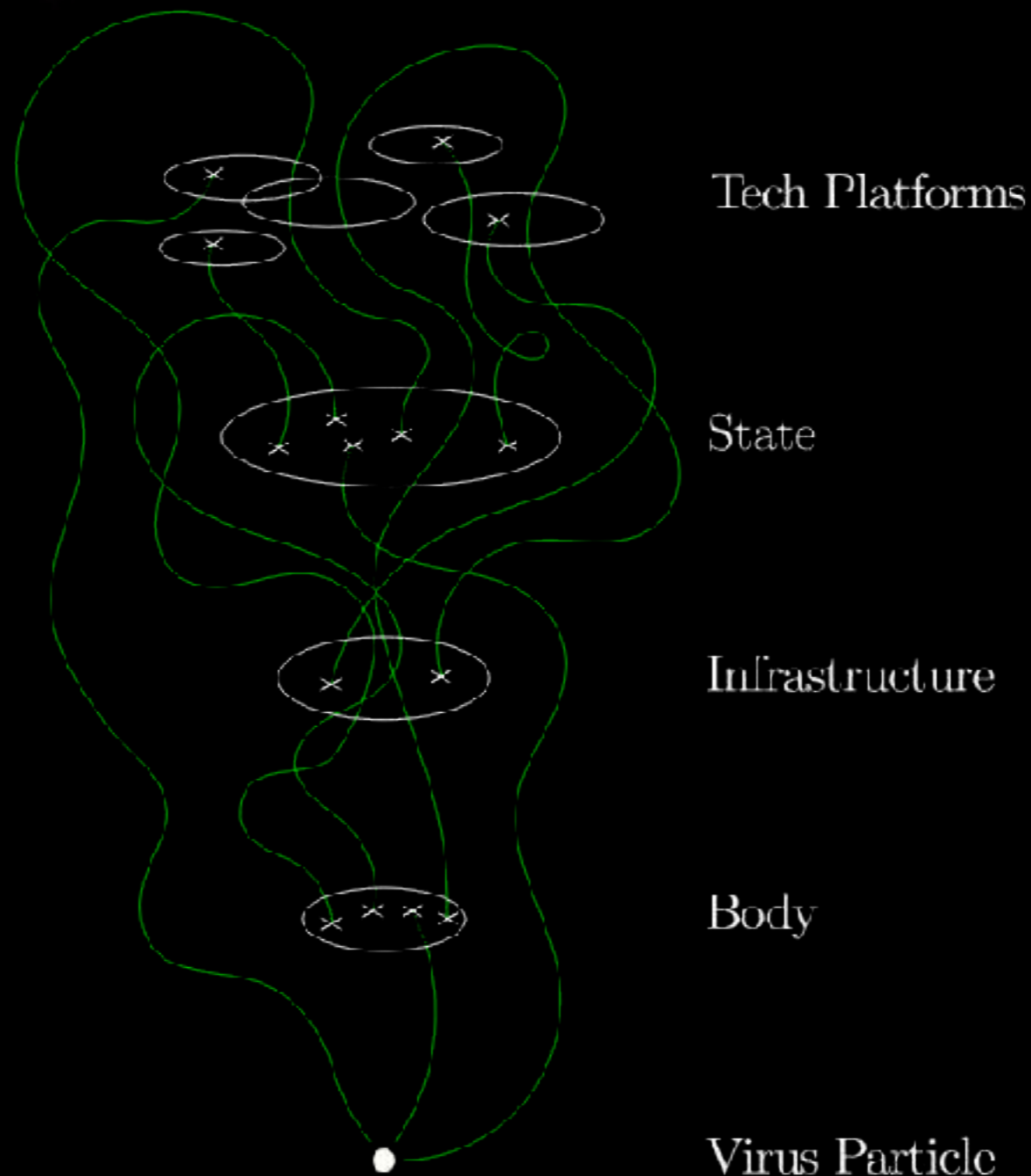
#5 body



To use this lens, ask yourself?

How does the phenomena relate to your body?

#6 representation



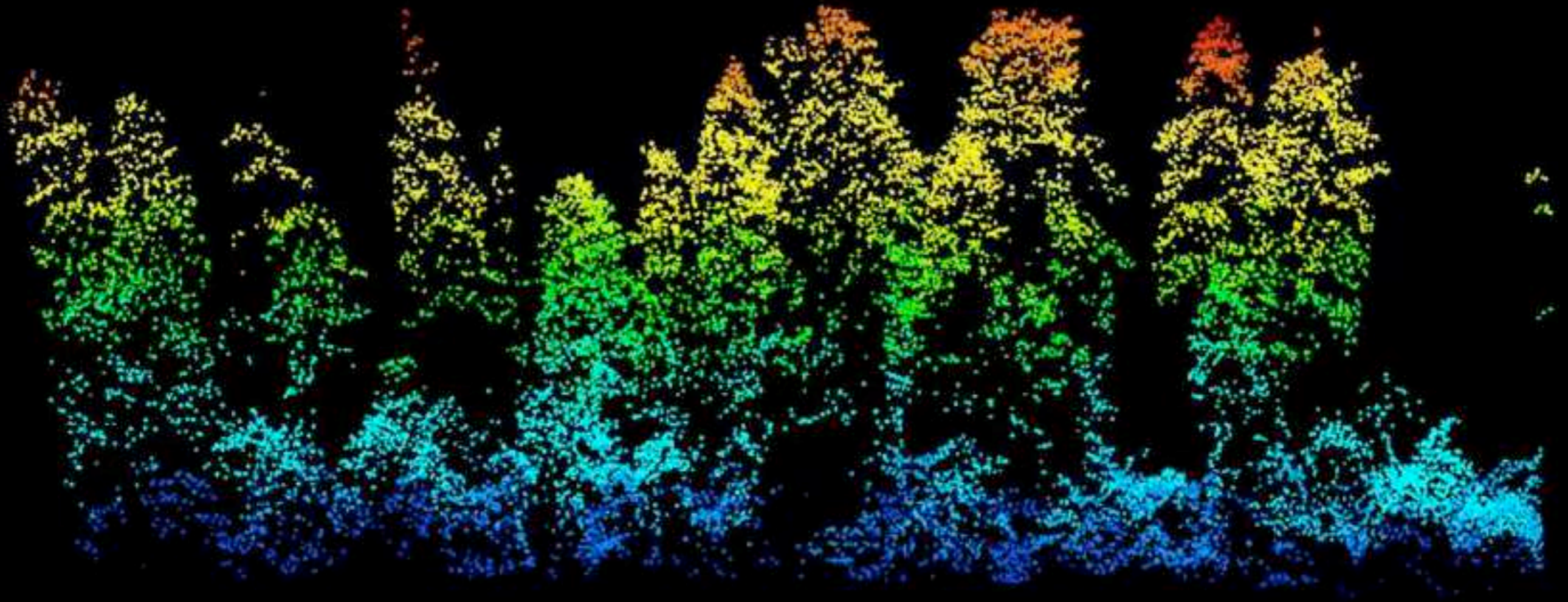
To use this lens, ask yourself?

How do you describe the phenomena?

USDA Forest Service Lidar scan

#7 sensors

LDV -- V1.48 -- USDA Forest Service -- Pacific Northwest Research Station



To use this lens, ask yourself?

How do you observe the phenomena?

#8 relationships



How does the phenomena relate to other parts of the world?

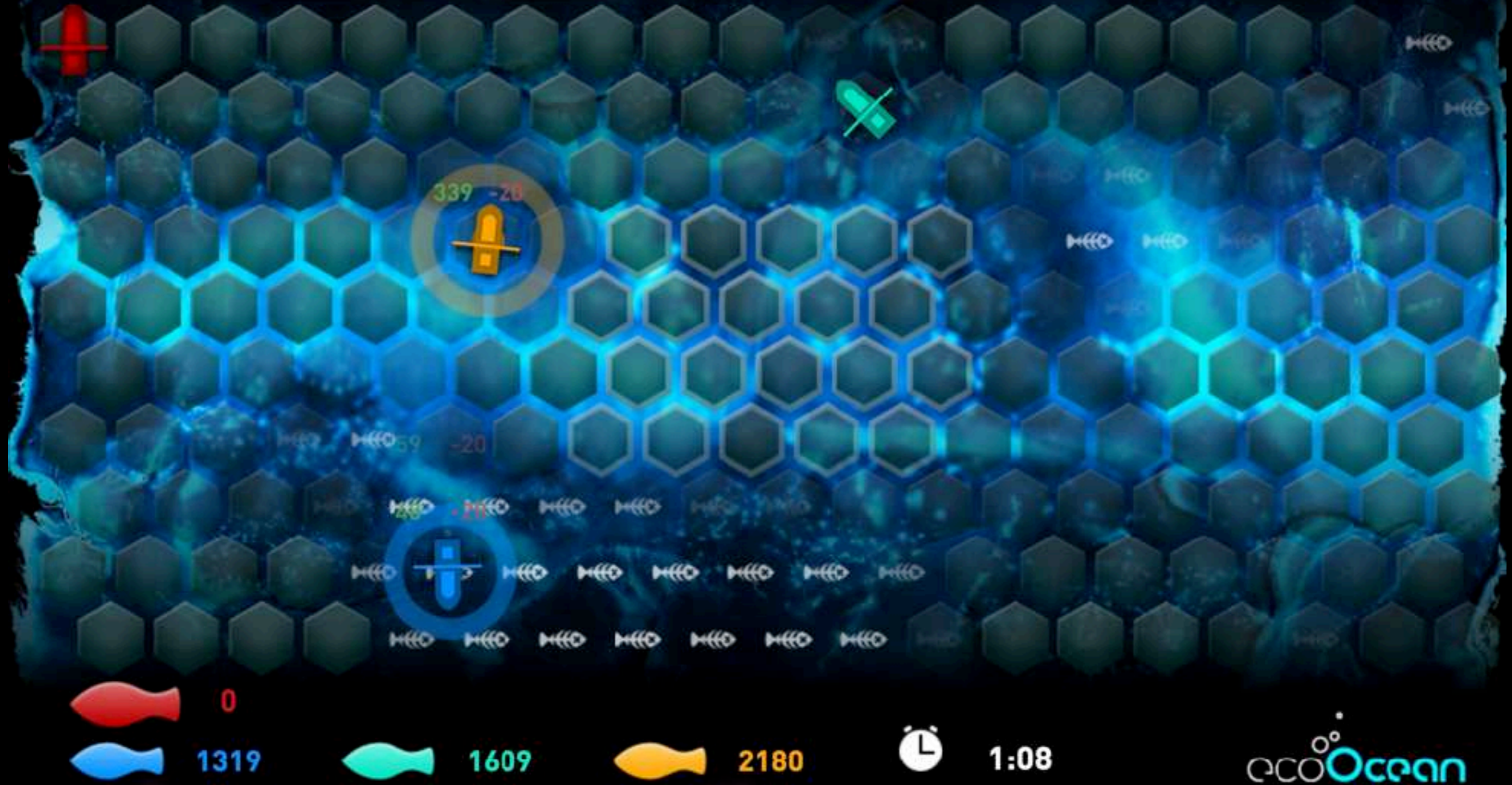
Coal spoil in Wales

#9 remnants

To use this lens, ask yourself?

What does the phenomena leave behind?

#10 simulation



To use this lens, ask yourself?

How would you simulate the phenomenon?